

The Power Of Your Love

Words and Music by
Geoff Bullock

♩ = 85

G D/F# Em7 Bm7



1. Lord I come to You, _____ let my heart be changed, re - newed; _____
2. Lord un - veil my eyes, _____ let me see You face to face; _____

4 Em7 D C D7sus D7



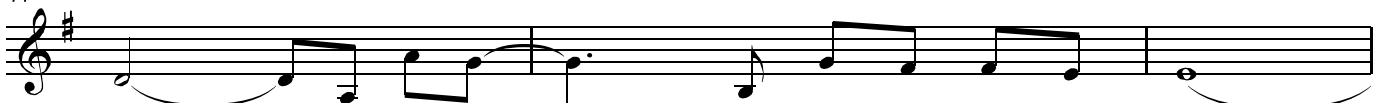
_____ ♪ Flow - ing from the grace that I found _____ in
_____ the know - ledge of Your love, as You live, _____ in

7 Em7 Dsus D7 G D/F# Em7



You. And Lord I've come to know _____ the weak - ness - es I
me. ♪ Lord re - new my mind _____ ♪ as Your will un -

11 Bm7 Em7 D C



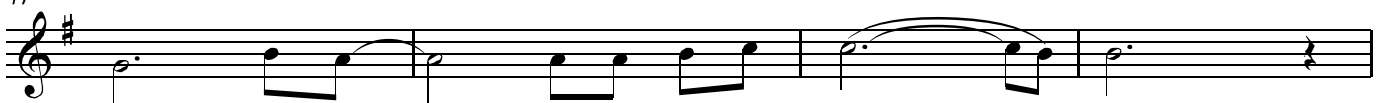
see _____ ♪ in me _____ will be stripped a - way _____
folds _____ in my life, _____ in liv - ing ev - 'ry day _____

14 Dsus D7 C/G G D/F# Em7 D



_____ by the pow'r of Your love. _____
_____ by the pow'r of Your love. _____

17 C C/E D C/G D G D/F# Em7 D



Hold me close, _____ let Your love sur - round _____ me,

The Power Of Your Love - 2

21 C C/E D D7 G Am7

bring me near, _____ draw me to Your _____ side. _____

Detailed description: This block contains the first line of music, measures 21 to 23. It is written in treble clef with a key signature of one sharp (F#). The melody consists of quarter and eighth notes, with some notes beamed together. Chord symbols are placed above the staff: C, C/E, D, D7, G, and Am7. The lyrics are: 'bring me near, _____ draw me to Your _____ side. _____'.

24 G/B F/G G7 C C/E D

And as I wait, _____ I'll rise up like the

Detailed description: This block contains the second line of music, measures 24 to 26. The melody continues with quarter and eighth notes. Chord symbols are: G/B, F/G, G7, C, C/E, and D. The lyrics are: 'And as I wait, _____ I'll rise up like the'.

27 C/G G D Em7 D

ea - gle, and I will soar with You, Your spir - it leads me

Detailed description: This block contains the third line of music, measures 27 to 29. The melody features a long note in measure 27 followed by eighth notes. Chord symbols are: C/G, G, D, Em7, and D. The lyrics are: 'ea - gle, and I will soar with You, Your spir - it leads me'.

30 C C/D C/G D G Dsus D7 G

on in the pow'r of Your love. _____

Detailed description: This block contains the fourth line of music, measures 30 to 32. It includes a double bar line and a repeat sign. Chord symbols are: C, C/D, C/G, D, G (with a '1' below it), Dsus, D7, and G (with a '2' below it). The lyrics are: 'on in the pow'r of Your love. _____'.